

PROJECT NAME:
NEW SHEETZ STORE

**BATH TWP.
GHENT RD.**

Along Ghent Road
Akron, OH 44333

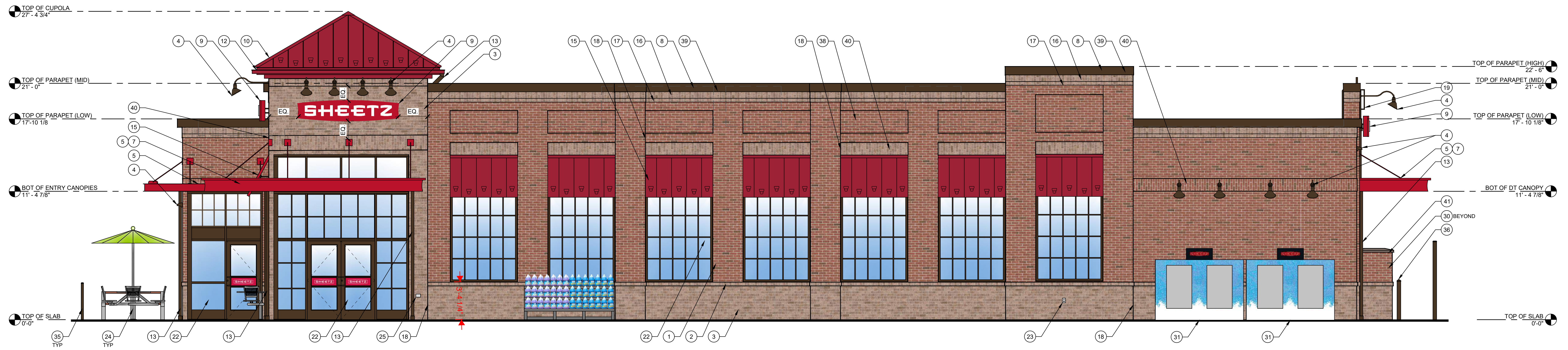
OWNER:
SHEETZ, INC.

5700 SIXTH AVE.
ALTOONA, PA 16602

CONSULTANT

PROFESSIONAL

KEYPLAN

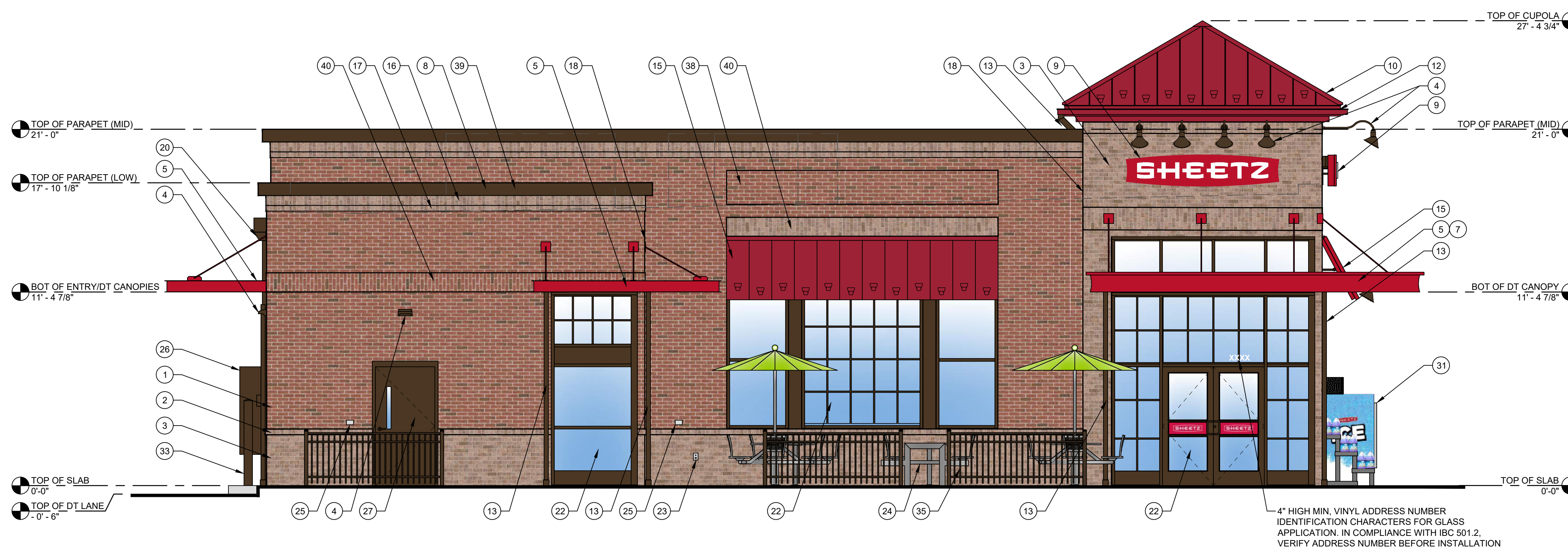


1 FRONT ELEVATION
1/4" = 1'-0"

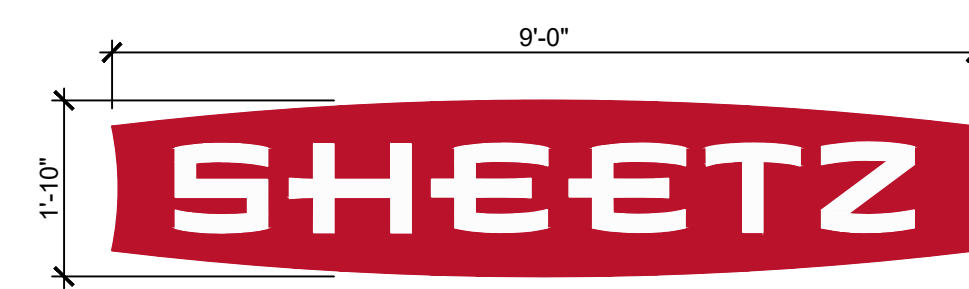
- TYPICAL EXTERIOR ELEVATION NOTES:**
- ALL LIGHTS SHOWN ABOVE AND/OR BELOW DOORS OR WINDOWS ARE TO BE CENTERED ON THE DOOR OR WINDOW UNLESS NOTED OTHERWISE.
 - FIXTURES/EQUIPMENT BETWEEN TWO DOORS OR WINDOWS ARE TO BE CENTERED EQUALLY.
 - EXTERIOR SEALANT FOR STONE SHALL COMPLY WITH SECTION 07 9005 JOINT SEALANTS. GENERAL BUILDING FASCIAE WEATHER SEALANT AND SHALL MATCH THE COLOR OF THE STORE.

EXTERIOR ELEVATION KEYNOTES:

- BRICK VENEER RUNNING BOND, COLOR: ALBANY BY GLEN GERY. SEE MASONRY SPEC
- BRICK ROWLOCK COURSE - PULL 1/2" U.N.O. COLOR: GREY ASH BY GLEN GERY. SEE MASONRY SPEC
- BRICK VENEER RUNNING BOND, COLOR: GREY ASH BY GLEN GERY. SEE MASONRY SPEC
- EXTERIOR LIGHT FIXTURE, REFER TO ELECTRICAL DRAWINGS
- ARCHITECTURAL CANOPY, COLOR: REGAL RED, PREMIUM TWO-COAT KYMAR FINISH
- BRICK ROWLOCK COURSE - PULL 1/2" U.N.O. COLOR: ALBANY BY GLEN GERY. SEE MASONRY SPEC
- LIGHTED CURVED FASCIA CANOPY ATTACHMENT
- METAL COPING, COLOR: DARK BRONZE
- WALL MOUNTED BUILDING SIGN, SEE SHEET A200.
- STANDING SEAM METAL ROOF, COLOR: BRITE RED
- NOT USED
- GUTTER, COLOR TO MATCH CUPOLA COLOR
- DOWNSPOUT, COLOR: DARK BRONZE
- DRIVE-THRU WINDOW (IF APPLICABLE)
- METAL STANDING SEAM SHED STYLE AWNING AND FRAME ASSEMBLY, ROOF COLOR: BRITE RED, FRAME COLOR: DARK BRONZE
- BRICK SOLDIER COURSE, COLOR: 680 BY CONTINENTAL BRICK COMPANY. SEE MASONRY SPEC
- BRICK ROWLOCK COURSE, COLOR: 680 BY CONTINENTAL BRICK COMPANY. SEE MASONRY SPEC
- CONTROL JOINT, SEE MASONRY SPEC
- STEEL ROOF LADDER AND CRANKY POST, COLOR: DARK BRONZE
- STANDARD THROUGH WALL SCUPPER WITH CONDUCTOR HEAD & DOWNSPOUT, COLOR: DARK BRONZE
- OVERFLOW SCUPPER
- ALUMINUM STOREFRONT SYSTEM, SEE A600
- EXTERIOR HOSE BIB, REFER TO PLUMBING DRAWINGS
- OUTDOOR FURNITURE
- ELECTRICAL RECEPTACLE, REFER TO ELECTRICAL DRAWINGS
- ELECTRICAL EQUIPMENT, REFER TO ELECTRICAL DRAWINGS
- HM DOOR AND FRAME, COLOR: DARK BRONZE
- EMERGENCY WATER CONNECTION, REFER TO PLUMBING DRAWINGS
- SEAMLESS ALUM PANEL SYSTEM WITH EXPOSED FASTENERS, COLOR: DARK BRONZE
- PROPANE LOCKER
- ICE MERCHANDISER
- RTI FILLPORT
- STEEL BOLLARD, COLOR: DARK BRONZE
- CO2 FILLPORT
- DECORATIVE ALUMINUM FENCE, COLOR: DARK BRONZE
- AUTOMATIC DOOR PUSH PLATE AND BOLLARD, BOLLARD COLOR: DARK BRONZE
- GAS METER AND RISER, REFER TO CIVIL UTILITY PLAN, COLOR: DARK BRONZE
- BRICK PANEL - RECESS 1/2"
- LIGHT CHANNEL AT PARAPET COPING, SEE ARCHITECTURAL AND ELECTRICAL DRAWINGS FOR MORE INFORMATION.
- BRICK SOLDIER ACCENT - VERTICAL RUNNING BOND PATTERN



2 LEFT ELEVATION
1/4" = 1'-0"



OUTLINE AREA = 14.84 SQ. FT.
BOX AREA = 16.52 SQ. FT.
TYPICAL OF THREE
PROJECTS 7" OFF FACE OF BUILDING

A WALL MOUNTED "SHEETZ" BUILDING SIGN
1/2" = 1'-0"

ISSUE:	03.05.2026
SITE ID NO:	214877
AUTHOR BY:	AMM
REVIEW BY:	RJH
VERSION:	6139_v1.9

EXTERIOR
ELEVATIONS

A200

PRELIMINARY FLOOR PLAN

MARK | DATE | DESCRIPTION



CESO
WWW.CESOINC.COM

2800 Corporate Exchange Dr., Suite 400
Columbus, OH 43221
Phone: 614.794.7080 Fax: 888.208.4826

EXISTING LEGEND

- Anchor Pole
- Guy Wire
- Catch Basin
- Curb Inlet
- Downspout
- Deciduous Tree
- Electric Box
- Electric Meter
- Fire Hydrant
- Gas Meter
- Light Pole
- Power Telephone Light Pole
- Power Light Pole
- Sanitary Manhole
- Sign
- Signal Pole
- Storm Manhole
- Communication Box
- Telephone Pole
- Traffic Box
- Water Valve
- Water Shut-off
- Gas Line
- Water Line
- Underground Electric
- Underground Communications
- Overhead Utility Line
- Storm Sewer
- Sanitary Sewer
- Centerline Ditch
- Tree Line

SITE LEGEND

PROPOSED

- BUILDING
- CONCRETE CURB
- EDGE OF PAVEMENT / WALK
- ASPHALT / CONCRETE TRANSITION
- PARKING SPACE COUNT
- SIGN

UTILITY LEGEND

PROPOSED

- CATCH BASIN
- STORM SEWER
- SANITARY SEWER
- CLEANOUT
- DOWNSPOUT
- WATER VALVE

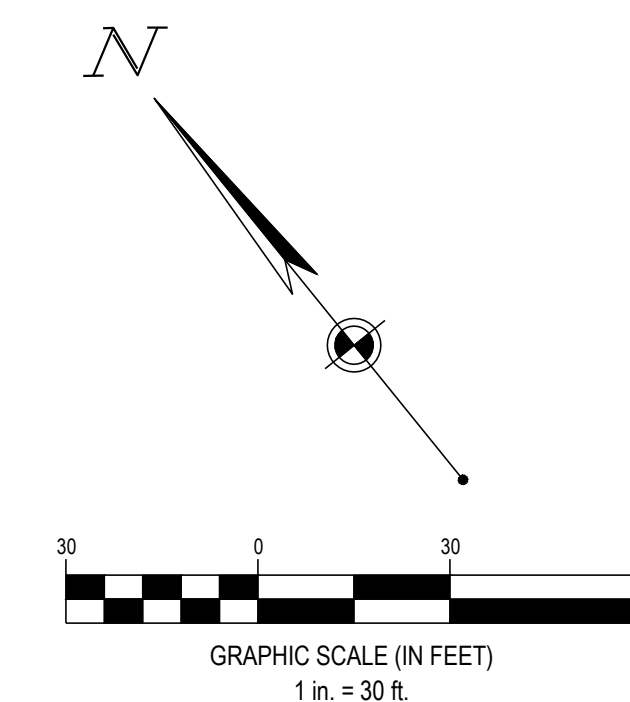
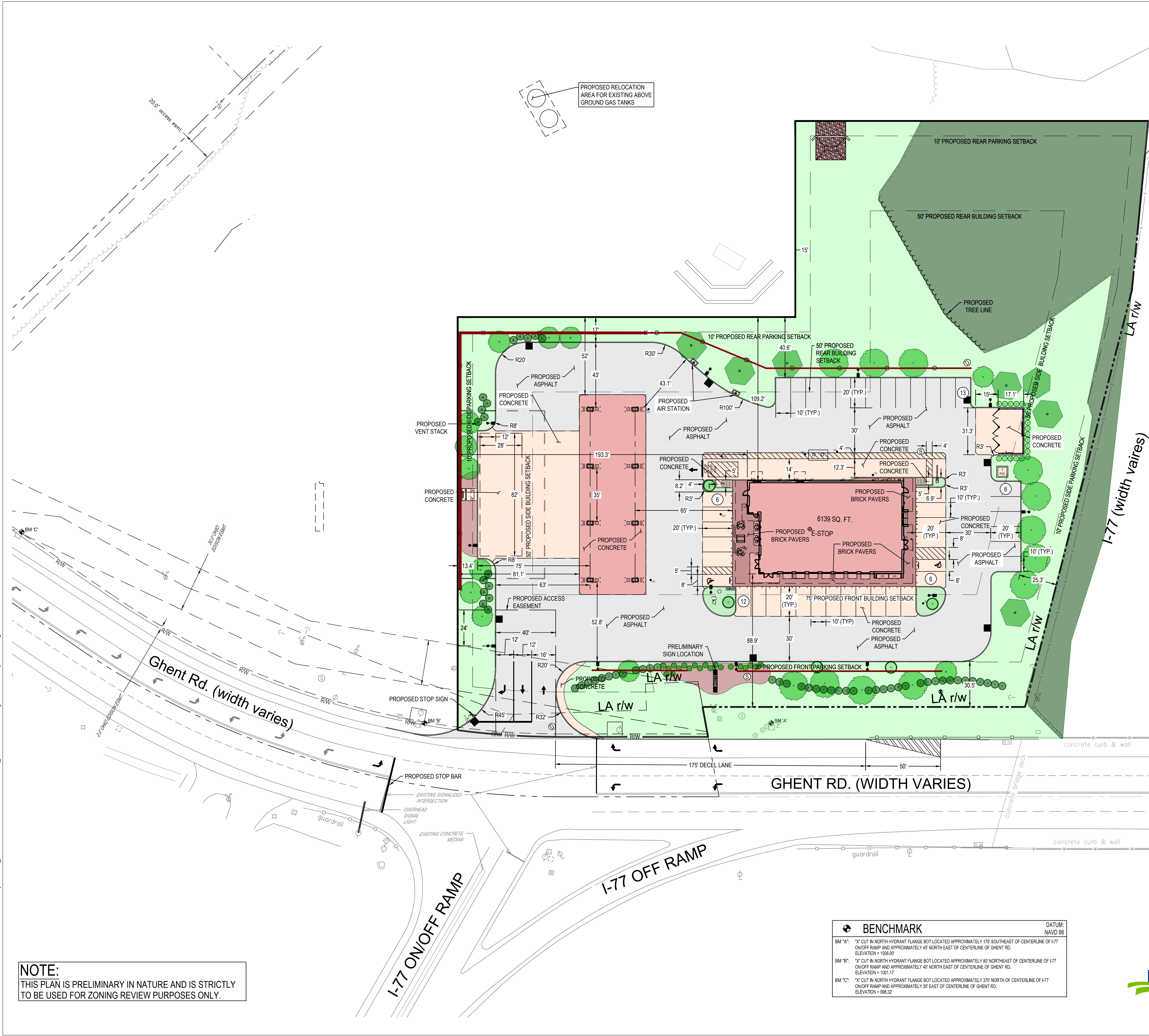
PARKING COUNT = 43 SPACES

GENERAL NOTES:

- ALL PAVEMENT MARKINGS SHALL BE YELLOW.

SITE COVERAGE

PROPOSED PERVIOUS = 1.62 ACRES (51%)
 PROPOSED IMPERVIOUS = 1.60 ACRES (49%)
 TOTAL AREA = 3.22 ACRES



BENCHMARK	DATUM:
BM "A": "X" CUT IN NORTH HYDRANT FLANGE BOT LOCATED APPROXIMATELY 175' SOUTHEAST OF CENTERLINE OF I-77 ON/OFF RAMP AND APPROXIMATELY 45' NORTH EAST OF CENTERLINE OF GHENT RD. ELEVATION = 1008.07	NAVD 88
BM "B": "X" CUT IN NORTH HYDRANT FLANGE BOT LOCATED APPROXIMATELY 87' NORTHEAST OF CENTERLINE OF I-77 ON/OFF RAMP AND APPROXIMATELY 40' NORTH EAST OF CENTERLINE OF GHENT RD. ELEVATION = 1001.17	
BM "C": "X" CUT IN NORTH HYDRANT FLANGE BOT LOCATED APPROXIMATELY 370' NORTH OF CENTERLINE OF I-77 ON/OFF RAMP AND APPROXIMATELY 35' EAST OF CENTERLINE OF GHENT RD. ELEVATION = 998.32	

NOTE:
 THIS PLAN IS PRELIMINARY IN NATURE AND IS STRICTLY TO BE USED FOR ZONING REVIEW PURPOSES ONLY.

VISCONSI COMPANIES, LTD

C-STORE DEVELOPMENT
981 GHENT ROAD
AKRON, OH 44333

Revisions / Submissions		
ID	Description	Date

Project Number: 766343
 Scale: AS SHOWN
 Drawn By: MST
 Checked By: RAP
 Date: 03.30.2026
 Issue: PRELIMINARY

Drawing Title:
SITE PLAN

C3.0



FORTY-EIGHT (48) HOURS BEFORE DIGGING IS TO COMMENCE, THE CONTRACTORS SHALL NOTIFY THE FOLLOWING AGENCIES: OHIO UTILITIES PROTECTION SERVICE AT 811 OR 800-362-2764 AND ALL OTHER AGENCIES WHICH MIGHT HAVE UNDERGROUND UTILITIES INVOLVING THIS PROJECT AND ARE NONMEMBERS OF STATE UTILITIES PROTECTION SERVICE

C:\DCA\CCD\des\CESOV\Visconsi\Ghent Rd Bath OH\Project Files\CESO\03-CIVIL\PLAN\LOT1766343_C30 SITE PLAN.dwg - 5/5/2026 - Tyler Whittington



MATERIALS FOR BATH TOWNSHIP



ALBANY BY GLEN-GERY BRICK



GREY ASH BY GLEN GERY BRICK



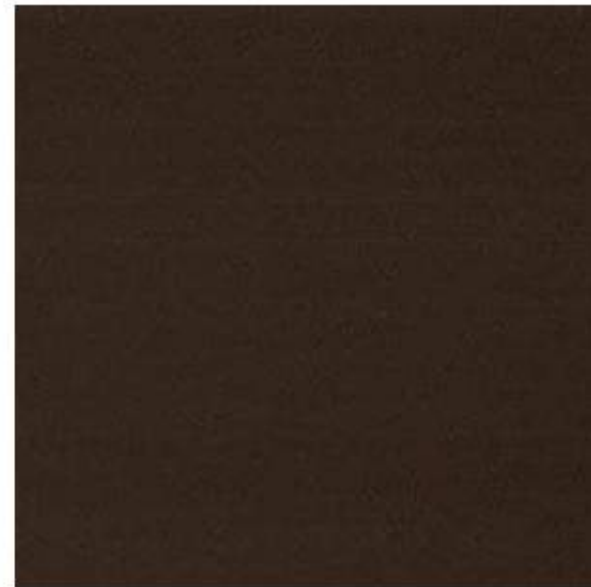
VINYL BARN FENCE



4' & 6' VINYL FENCE
CATALST, BRECKENRIDE, RED CEDAR



RED ACM



DARK BRONZE METAL



RED METAL



GOOSENECK LIGHT FIXTURES

